

**JK-SHIRLEY I and
Ordinary Type**

零件样本

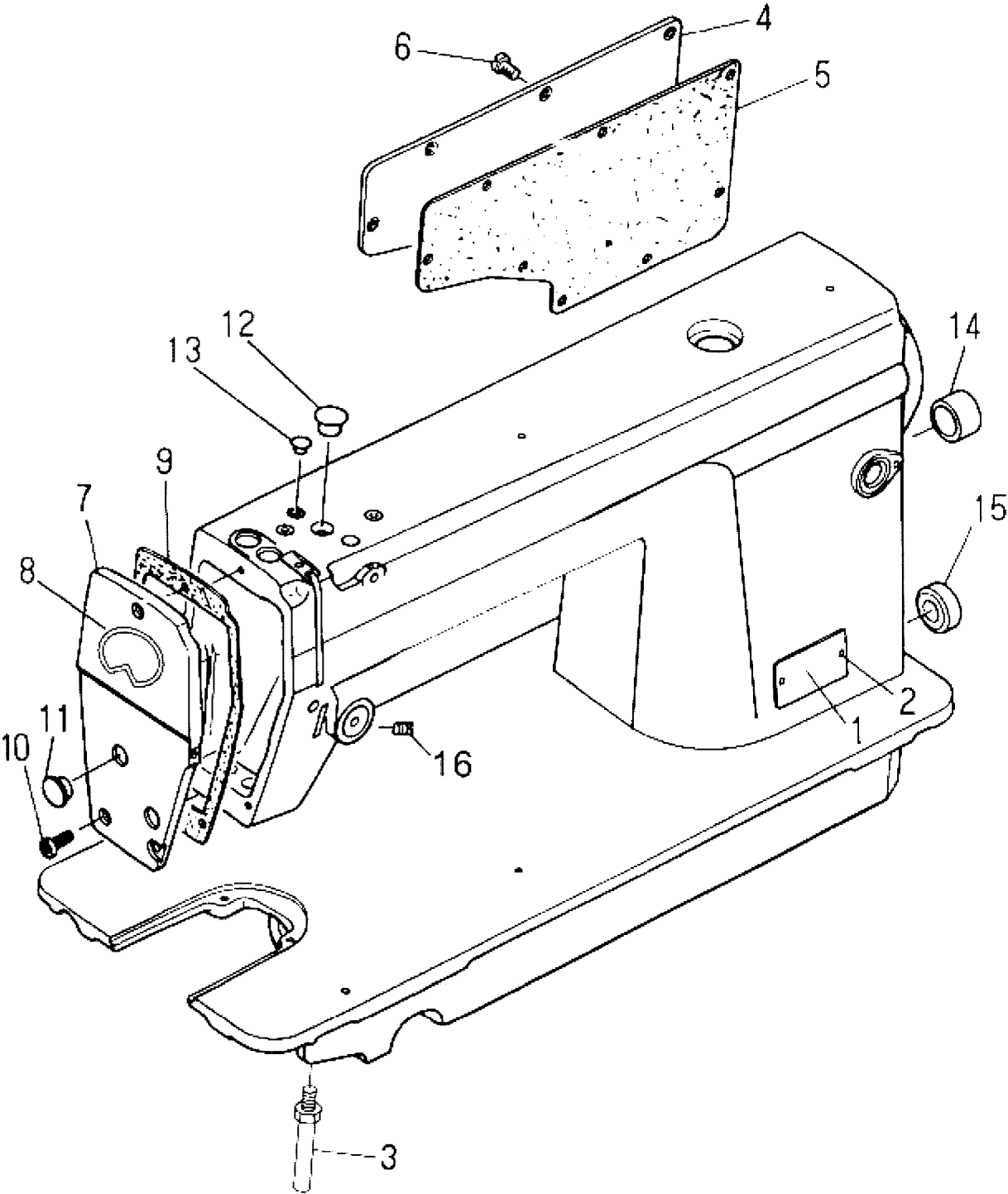
PARTS BOOK

**New JACK Sewing
Machine**

2013 年 4 月版

Revised edition in April, 2013

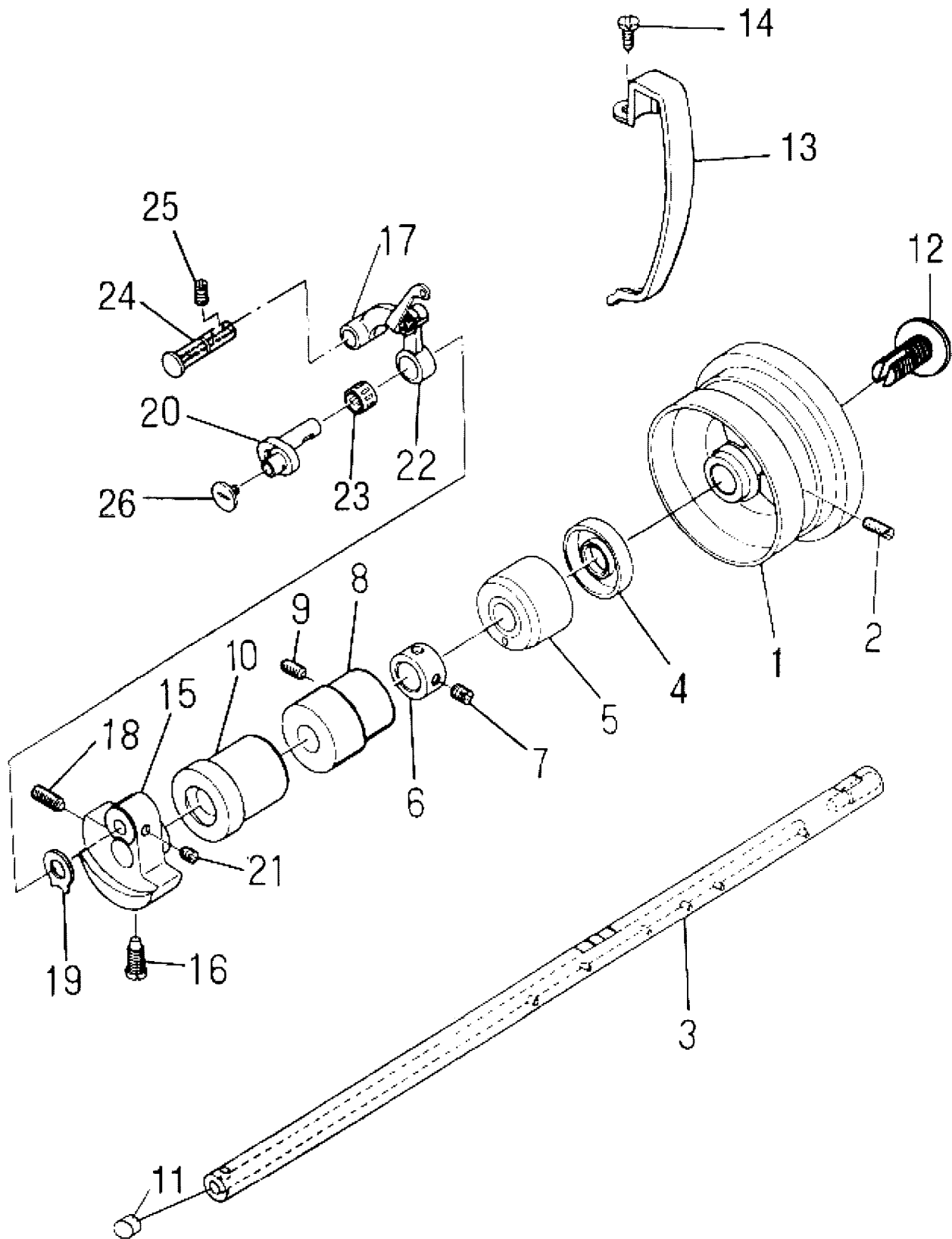
1. 机壳分组件 Arm bed components



1. 机壳外装部件/Arm bed components

序号 NO.	备注 Note	零件编号 PartNo.	参考编号 Ref. PartNo	零件名称 PartName	零件描述 Desc.	数量
1		10137001		型号牌	Model plate	1
2		R03001		型号牌铆钉	Model plate rivet	2
3		101S12001		底板支柱	Bed screw stud	4
4		300088		JK-5550/8500后窗板	Side plate	1
		300097		JK-8800/8910/8755/608/珠边机/6090后窗板	Side plate	1
		300096		JK-8900/8900/8920/8988后窗板	Side plate	1
5		10322001		JK-8800/8910/8755/608/珠边机/6090后窗板垫	Gasket	1
		10122001		JK-5550后窗板垫	Gasket	1
		10422001		JK-8900后窗板垫	Gasket	1
6		101S11001		螺钉SM3/16"×28 L=9	Screw SM3/16"×28 L=9	8
7		301741		JK-8800/608 (8750) /609/6090面板	Face plate arm	1
		300207		JK-8500/8988/8920面板	Face plate arm	1
		300558		JK-8900面板	Face plate arm	1
8		10137002		商标牌	Plate with trademark	1
9		10122098		JK-8800/608 (8750) /609/6090面板垫	Gasket	1
		10222001		JK-8500面板垫	Gasket	1
		10422002		JK-8900面板垫	Gasket	1
10		101S11001		螺钉SM3/16"×28 L=9	Screw SM3/16"×28 L=9	3
11		10122003		面板调节螺孔塞	Rubber plug	2
12		10122004		针杆曲柄螺孔塞	Rubber plug	1
13		10122005		挑线连杆销螺孔塞	Rubber plug	1
14		10122006		送料调节器孔塞	Rubber plug	1
15		10122007		下轴工艺孔塞	Rubber plug	1
16		101S15006		螺钉SM15/64"×28 L=7	Screw SM15/64"×28 L=7	1

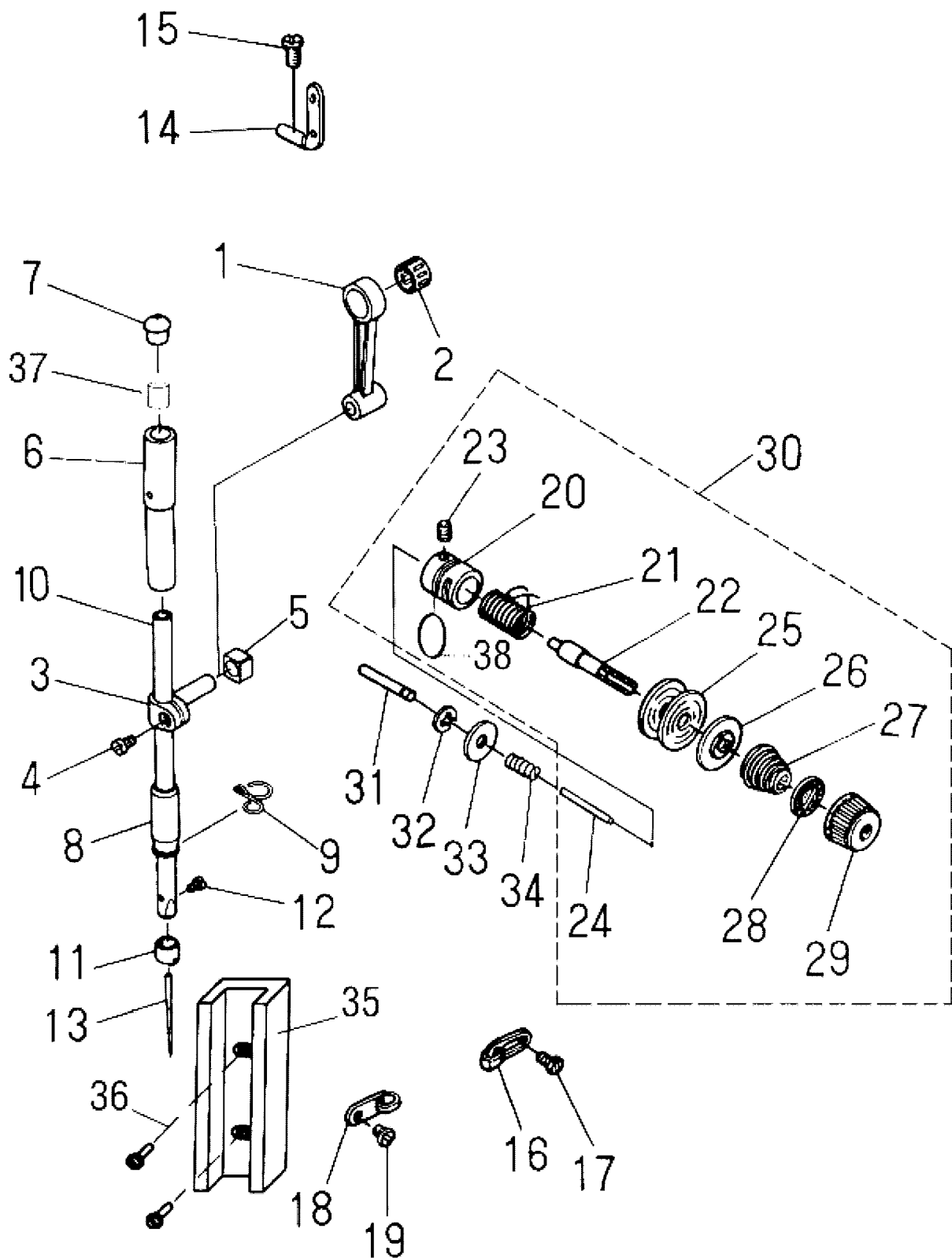
2. 上轴、挑线分组件 Main shaft, take-up components



2. 上轴、挑线分组件/Main shaft、take-up components

序号 NO.	备注 Note	零件编号 PartNo.	参考编号 Ref. PartNo.	零件名称 PartName	零件描述 Desc.	数量 Num.
1		300092		上轮	Hand wheel	1
		300453		JK608 (8750) /609 上轮	Hand wheel	1
2		101S15001		螺钉SM15/64"×28 L=15	Screw SM15/64"×28 L=15	2
3		10102001		上轴	Main shaft	1
		10102022		迅利 I / I B系列上轴	Main shaft	1
4		10122008		上轴油封	Main shaft	1
5		10103001		上轴后轴套	Main shaft bushing, rear	1
6		10108001		上轴挡圈	Thrust collar asm.	1
7		101S15007		螺钉SM1/4"×40 L=8	Screw SM1/4"×40 L=8	2
8		10403002		上轴中轴套	Brshing, intermediate	1
		12203002		迅利 I / I B系列上轴中轴套	Brshing, intermediate	1
9		101S15006		螺钉SM15/64"×28 L=7	Screw SM15/64"×28 L=7	1
10		1010300400		上轴前轴套分部件	Main shaft bushing front asm	1
11		10122012		上轴孔塞	Rubber plug	1
12		101S30001		螺钉SM5/16"×24 L=14	Screw SM5/16"×24 L=14	1
13		300095		挑线杆护罩	Thread takeup lever cover	1
		300611		迅利 I / I B系列/JK-608 (8750) /609挑线杆护罩	Thread takeup lever cover	1
14		101S11004		螺钉SM3/16"×28 L=7	Screw SM3/16"×28 L=7	1
15		10104001		针杆曲柄	Counterweight	1
		11404035		JK-608 (8750) /609/8900H针杆曲柄	Counterweight	1
16		101S11003		螺钉SM9/32"×28 L=16	Screw SM9/32"×28 L=16	1
17		10105001		挑线连杆	Thread takeup lever	1
18		101S15004		螺钉SM9/32"×28 L=16	Screw SM9/32"×28 L=16	1
19		10112003		针杆曲柄护板	Counterweight protecting plate	1
20		1011000100		挑线曲柄分部件	Needle bar crank asm.	1
21		101S15002		螺钉SM1/4"×40 L=6	Screw SM1/4"×40 L=6	2
22		1013800100		挑线杆分组件	Thread takeup lever asm	1
23		10124001		挑线杆滚针轴承	Needle bearing	1
24		10126001		挑线连杆销	Thread takeup crank shaft	1
25		101S15001		螺钉SM15/64"×28 L=15	Screw SM15/64"×28 L=15	1
26		101S17001		螺钉SM9/64"×40 L=6	Screw SM9/64"×40 L=6	1

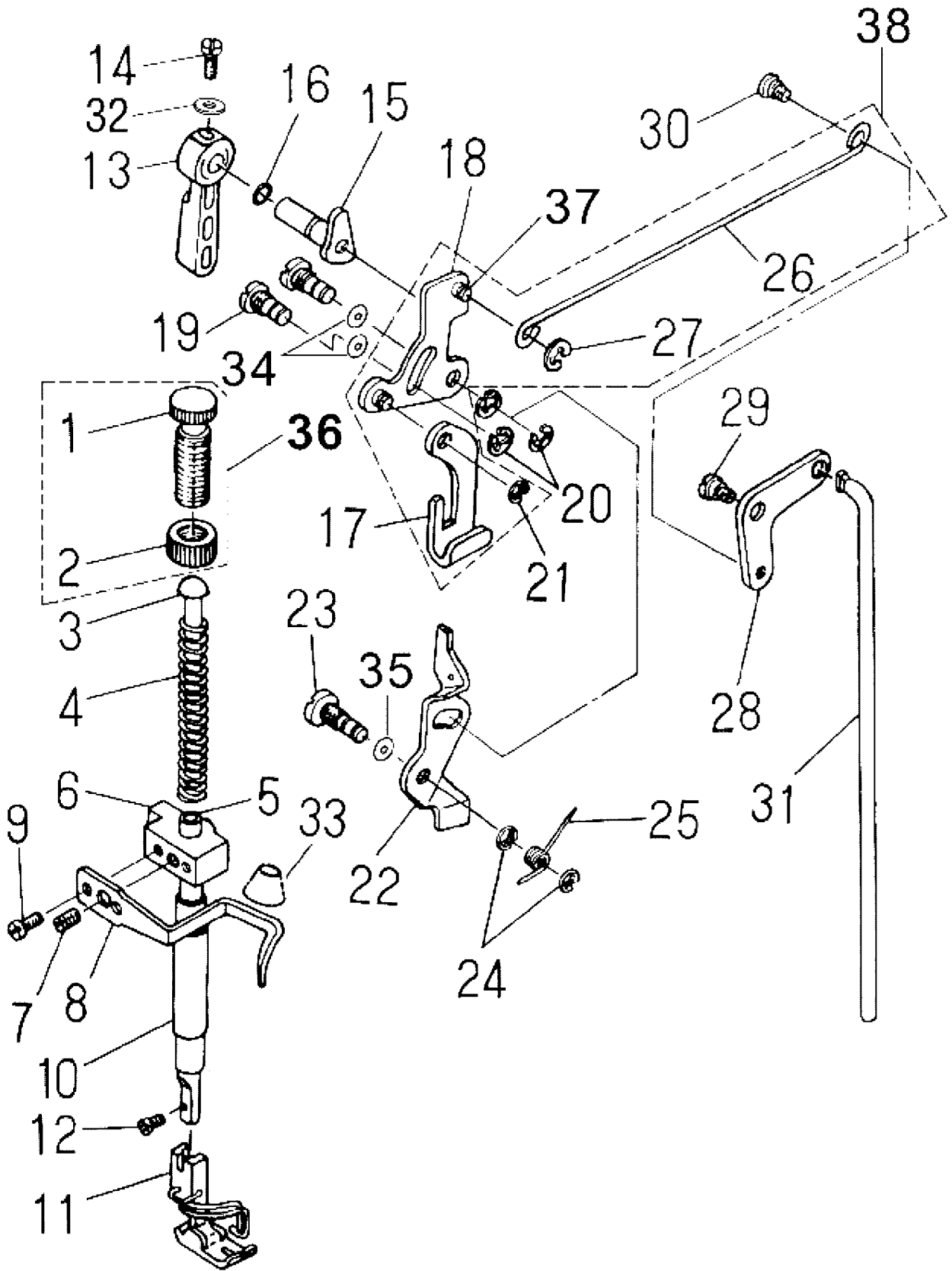
3. 针杆、夹线分组件 Needle bar, thread tension components



3. 针杆、夹线分组/Needle bar, thread tension components

序号 NO.	备注 Note	零件编号 PartNo.	参考编号 Ref. PartNo	零件名称 PartName	零件描述 Desc.	数量
1		10105002		针杆连杆	Needle bar crank rod	1
2		10124001		挑线杆滚针轴承	Needle bearing	1
3		10138002		针杆连接柱	Needle bar connection asm.	1
4		101S11005		螺钉SM9/64"×40 L=6	Screw SM9/64"×40 L=6	1
5		10109001		针杆连接柱滑块	Slide block	1
6		10103009		针杆上衬套	Needle bar bushing, upper	1
7		10122013		针杆上衬套孔塞	Cap	1
8		10103010		针杆下衬套	Needle bar bushing, lower	1
		10103023		JK-608 (8750) /8900H (6-1) 针杆下衬套	Needle bar bushing, lower	1
9		10413001		针杆下衬套线勾	Needle bar thread guide	1
10		10102002		针杆	Needle bar	1
		10102012		JK-608 (8750) //8900H (6-1) 针杆	Needle bar	1
11		10113002		针杆线勾	Needle bar thread guide	1
		10113009		JK-608 (8750) /8900H (6-1) 针杆线勾	Needle bar thread guide	1
12		101S11006		螺钉SM1/8"×44 L=4.5	Screw SM1/8"×44 L=4.5	1
13		10117001		机针 (14#)	Needle	1
		10117002		JK-608 (8750) /8900H(6-1) 机针(#21)	Needle	1
14		10113003		二眼线勾	Twohole thread eyelet	1
15		101S11004		螺钉SM3/16"×28 L=7	Screw SM3/16"×28 L=7	1
16		10113004		右线勾	Frsme thresd guide, right	1
17		101S11007		螺钉SM11/64"×40 L=6	Screw SM11/64"×40 L=6	1
18		10113005		左线勾	Frsme thresd guide, left	1
19		101S11007		螺钉SM11/64"×40 L=6	Screw SM11/64"×40 L=6	1
20		10103011		挑线簧调节座	Tension post socket	1
21		10127001		挑线簧	Takeup spring	1
22		101S30002		螺钉SM1/4"×40 L=17.5	Screw SM1/4"×40 L=17.5	1
23		101S15005		螺钉SM9/64"×40 L=5.5	Screw SM9/64"×40 L=5.5	1
24		10126002		松线钉	Thread release pin	1
25		480001		夹线板(表面处理)	Tension disc	2
26		10112006		松线板	Tension disc holder	1
27		10127020		夹线簧(细)	Tension spring	1
28		10112007		夹线制动板	Tension disc stopper	1
29		112S13002		夹线螺母SM1/4"×40 L=10	Tension nut SM1/4"×40 L=10	1
30		400507		夹线器组件	Thread tension asm	1
		400527		JK-608 (8750) 夹线器组件(粗)	Thread tension asm	1
31		10126003		松线辅钉	Tension release supporting pin	1
32		H05012		松线辅钉挡圈	Snap ring	1
33		10128001		松线辅钉垫片	Washer plate	1
34		10127003		松线辅钉弹簧	Tension release pin spring	1
35		10109002		针杆接头滑块导轨	Needle bar trough	1
36		101S11008		螺钉SM11/64"×40 L=8	Screw SM11/64"×40 L=8	2
37		10123002		针杆上毡塞	Oil felt for needle bar	1
38		10122014		O形圈	Rubber ring	1

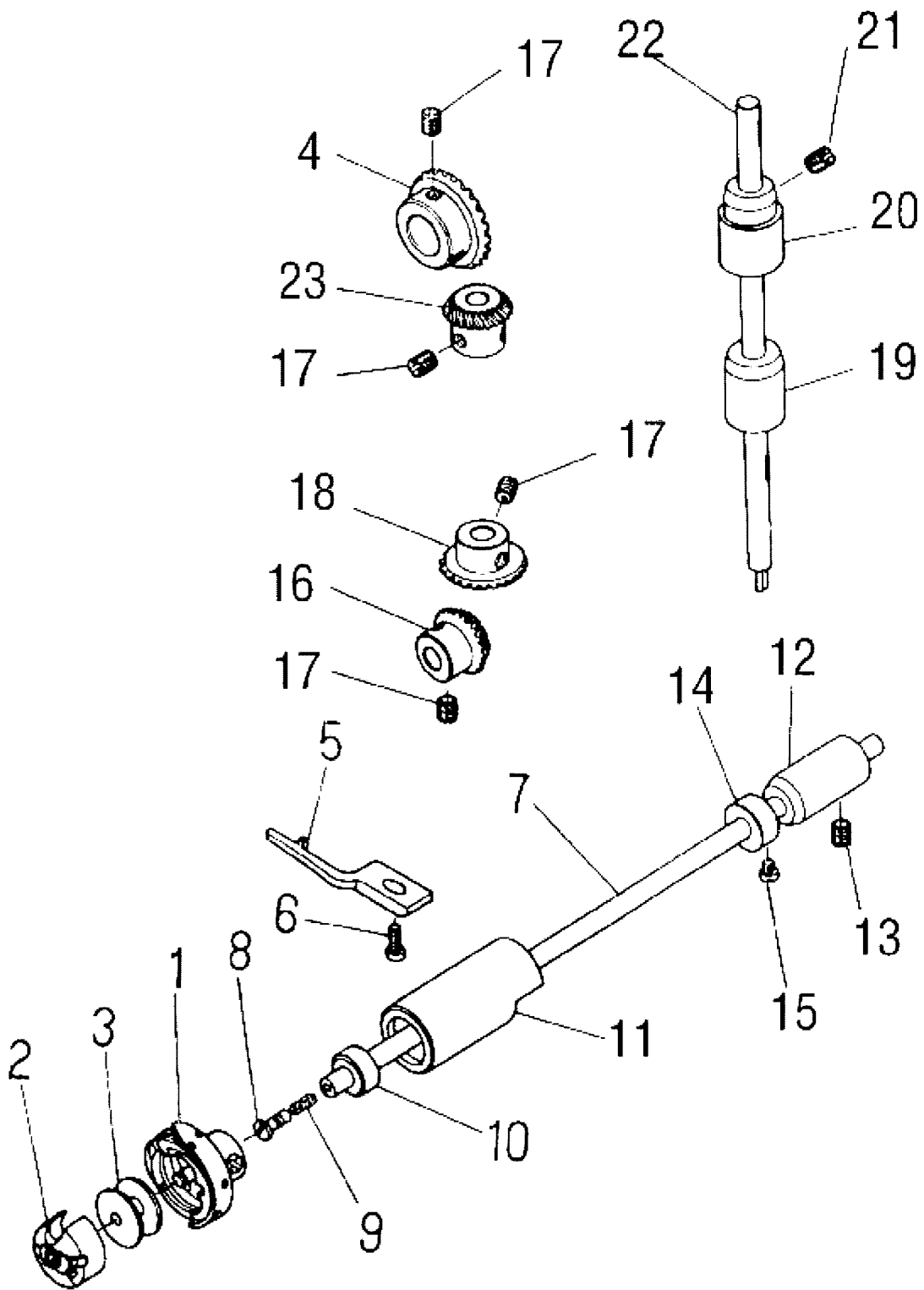
4. 压料分组件 Presser bar components



4. 压料分组件/Presser bar components

序号 NO.	备注 Note	零件编号 PartNo.	参考编号 Ref. PartNo.	零件名称 PartName	零件描述 Desc.	数量 Num.
1		10111034		调压螺钉SM1/2"×28 L=47	Presser spring regulator SM1/2"×28 L=47	1
2		10111036		调压螺母SM1/2"×28 L=8	Nut SM1/2"×28 L=8	1
3		10102003		调压导杆	Presser guide bar	1
4		10127005		调压簧	Presser spring	1
		10127023		迅利 I / I B系列调压簧	Presser spring	1
		10127018		JK-608 (8750)/609/8900H(6-1)调压簧	Presser spring	1
5		10102004		压杆	Presser bar	1
6		10409001		压杆导架	Needle bar guide bracket	1
7		101S15007		螺钉SM1/4"×40 L=8	Screw SM1/4"×40 L=8	1
8		10413003		JK-8500/8900/8800/608/609/6090/8900H (6-1) 缓线调节钩	Presser bar thread guide	1
		11413005		迅利 I / I B系列) 缓线调节钩	Presser bar thread guide	1
9		101S11005		螺钉SM9/64"×40 L=6	Screw SM9/64"×40 L=6	2
10		10103012		压杆衬套	Presser bar bushing lower	1
11		1011600100		压脚(部件)	presser foot asm	1
		1011600400		JK-608 (8750)/609/8900H(6-1) 活压脚板部件	presser foot asm	1
12		101S11009		螺钉SM9/64"×40 L=10.5	Screw SM9/64"×40 L=10.5	1
13		10111028		压脚扳手	Hand lifter	1
14		101S11010		螺钉SM9/64"×40 L=11	Screw SM9/64"×40 L=11	1
15		1011000200		压脚扳手凸轮分部件	Hand lifter cam asm.	1
16		001004		GB/T3452.1-1992 O型圈 4×1.8	Rubber ring	1
17		10112010		压脚升降板	Lifting lever	1
18		10112011		抬压脚前杠杆	Hand lifter link	1
19		101S20001		前杠杆螺纹销SM5/16"×24 L=5.5	Link shaft SM5/16"×24 L=5.5	2
20		H05003		螺纹销开口挡圈	Snap ring	3
21		H05003		升降板连接特制开口挡圈	Lifting lever ring	1
22		10112012		松线顶板	Tension release plate	1
23		101S20002		松线顶板螺纹销SM5/16"×24 L=5.5	Tension release shaft SM5/16"×24 L=5.5	1
24		H05003		螺纹销开口挡圈	Snap ring	2
25		10127008		松线顶板复位簧	Tension release return spring	1
26		10112013		抬压脚拉杆	Lifting lever connecting rod	1
27		H05003		拉杆开口挡圈	Snap ring	1
28		10112014		抬压脚后杠杆	Lifting lever link	1
29		101S20003		后杠杆轴位螺钉SM15/64"×28 L=6.4	Hinge screw SM15/64"×28 L=6.4	1
30		101S20004		抬牙脚拉杆螺钉SM3/16"×32 L=5	Hinge screw SM3/16"×32 L=5	1
31		10112015		抬压脚顶杆	Connecting rod vertical	1
32		10128002		垫圈	Washer	1
33		30122022		压脚轴碟形密封圈	Presser bar defend oil bushing	1
34		10128015		螺纹销橡胶垫圈(厚)	Washer	2
35		10128016		螺纹销橡胶垫圈(薄)	Washer	1
36		10111027		调压螺钉组件	Presser spring regulator asm	1
		1011102400		JK-8900H(6-1)调压螺钉组件	Presser spring regulator asm	1
37		10126005		抬压脚杆轴	Presser foot lifting lever shaft	2
38		1011200100		抬压脚前杠杆组件	Hand lifter link asm	1

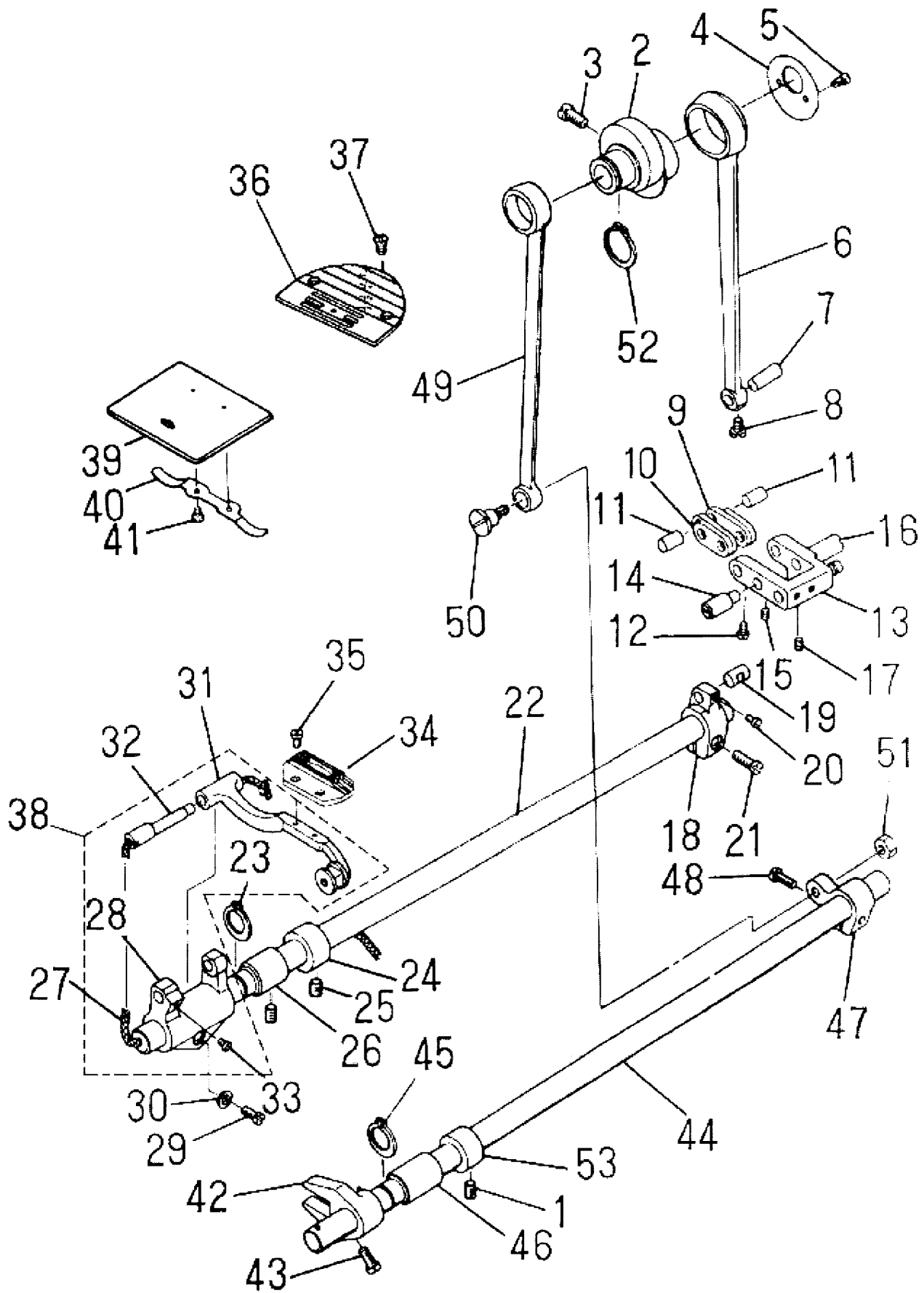
5. 勾线分组件 Hook driving shaft compinents



5. 钩线分组件/ Hook driving shaft components

序号 NO.	备注 Note	零件编号 PartNo.	参考编号 Ref. PartNo.	零件名称 PartName	零件描述 Desc.	数量 Num.
1		10118504		旋梭 (广濑)	Hook asm	1
		10118505		厚料旋梭	Hook asm	1
		10818001		大旋梭 (609旋梭) 厚料(德盛)	Hook asm	1
		10118001		国产旋梭	Hook asm	1
2		10118501		梭壳 (广濑)	Bobbin case asm	1
		10118002		梭壳 (国产)	Bobbin case asm	1
		10818502		605梭心套 (梭壳)	Bobbin case asm	1
3		10118003		梭心	Bobbin	1
		10818501		梭心605. 609大梭心	Bobbin	1
4		10425004		上轴伞齿轮(大)	Gear asm.	1
5		10112016		旋梭定位钩	Positioning finger	1
		10112032		JK-608 (8750) /8900H (6-1) 旋梭定位钩	Positioning finger	1
6		101S11011		螺钉SM11/64"×40 L=9.5	Screw SM11/64"×40 L=9.5	1
7		10102006		下轴	Hook driving shaft	1
		12202003		JK-609 (8755) 下轴	Hook driving shaft	1
8		101S30005		螺钉SM3/16"×32 L=13	Screw SM3/16"×32 L=13	1
9		10123003		下轴限油芯	Oil wick	1
10		10122015		下轴油封	Thrust collar	1
11		1010301300		下轴前轴套分部件	Bushing asm. front	1
12		10403012		下轴后轴套	Bushing, rear	1
13		101S15006		螺钉SM15/64"×28 L=7	Screw SM15/64"×28 L=7	1
14		10108002		下轴挡圈	Thrust collar asm.	1
15		101S11012		螺钉SM11/64"×40 L=4.8	Screw SM11/64"×40 L=4.8	2
16		10425001		下轴伞齿轮(小)	Pinion asm.	1
17		101S15007		螺钉SM1/4"×40 L=8	Screw SM1/4"×40 L=8	8
18		10425002		竖轴下伞齿轮(大)	Gear asm. large	1
19		10403013		竖轴下轴套	Upright shaft bushing, ower	1
20		10403014		竖轴上轴套	Bushing, upper	1
21		101S15006		螺钉SM15/64"×28 L=7	Screw SM15/64"×28 L=7	1
22		10102007		竖轴	Upright shaft	1
23		10425003		竖轴上伞齿轮(小)	Pinion asm.	1

6. 送料分组件 Feed mechanism components

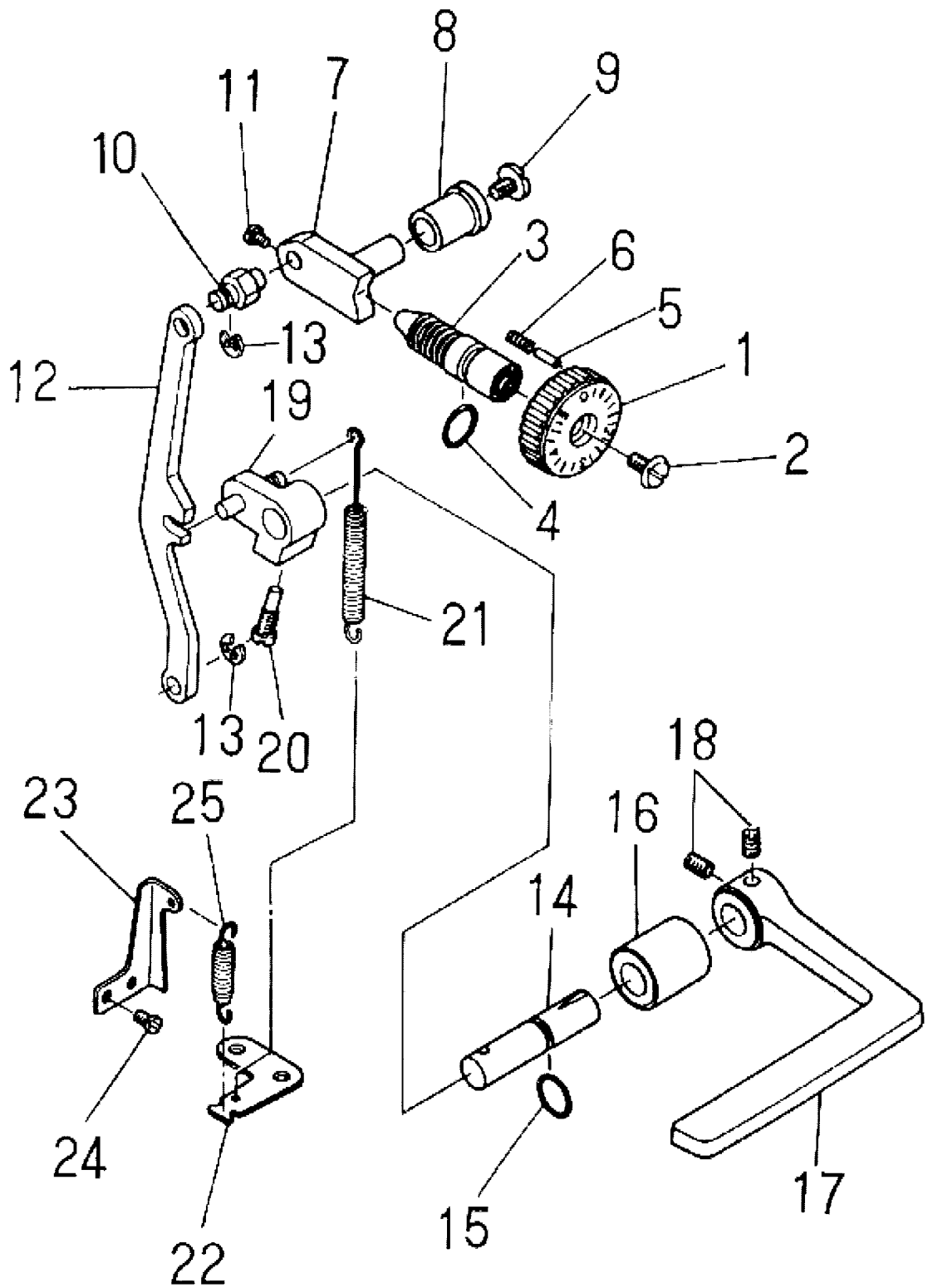


6. 送料分组件/Feed mechanism components

序号 NO.	备注 Note	零件编号 PartNo.	参考编号 Ref. PartNo.	零件名称 PartName	零件描述 Desc.	数量 Num.
1		101S15002		螺钉SM1/4"×40 L=6	Screw SM1/4"×40 L=6	2
2		400092		送料偏心轮	Feed drive cccentric cam	1
		400058		JK-8755/609偏心轮	Feed drive cccentric cam	1
		10810001		JK-6090-0602送料偏心轮	Feed drive cccentric cam	1
3		101S11013		螺钉SM1/4"×40 L=13	Screw SM1/4"×40 L=13	2
4		10112017		送料偏心轮盖板	Thrust collar	1
		10812002		JK-6090-0604送料偏心轮盖板	Thrust collar	1
5		101S11005		螺钉SM9/64"×40 L=6	Screw SM9/64"×40 L=6	2
6		400091		送料连杆	Rocker shaft connecting rod	1
		400083		JK-8755 (609) 送料连杆	Rocker shaft connecting rod	1
		10805002		JK-6090-0606送布连杆	Rocker shaft connecting rod	1
7		10126006		送料连杆销	Walking foot pin	1
8		101S11005		螺钉SM9/64"×40 L=6	Screw SM9/64"×40 L=6	1
9		400003		送料长摆动板	Walking foot link	2
10		400004		送料短摆动板	Connecting link	2
11		10126007		短摆动板连杆销	Walking foot pin	2
12		101S11005		螺钉SM9/64"×40 L=6	Screw SM9/64"×40 L=6	2
13		1010100200		送料摆动板座分部件	Walking foot adjusting link	1
		1080100200		JK-6090-0613倒送料摆动板座分部件	Walking foot adjusting link	1
14		10126009		送料摆动板座右销	Adjusting link fulcrum shaft	1
15		101S15010		螺钉SM15/64"×28 L=10.5	Screw SM15/64"×28 L=10.5	1
16		10126010		送料摆动板座右销	Adjusting link fulcrum shaft	1
17		101S15010		螺钉SM15/64"×28 L=10.5	Screw SM15/64"×28 L=10.5	1
18		10104002		送料曲柄	Feed rocker shaft crank asm	1
		12204003		JK-8755送料曲柄	Feed rocker shaft crank asm	1
		10804006		JK-6090-0618送料曲柄	Feed rocker shaft crank asm	1
19		10126011		送料曲柄销	Walking foot pin	1
20		101S11005		螺钉SM9/64"×40 L=6	Screw SM9/64"×40 L=6	1
21		101S11016		螺钉SM3/16"×28 L=14	Screw SM3/16"×28 L=14	1
22		10102008		送料轴	Feed rocker shaft	1
23		H03001		GB/T894.1-1986挡圈15	Retaining ring	1
24		10108003		送料轴挡圈	Thrust collar asm.	1
25		101S15002		螺钉SM1/4"×40 L=6	Screw SM1/4"×40 L=6	2
26		10403015		送料轴前轴套	Fccd tocker shaft bushing	1
27		10423005		送料轴油线	Oil wick	2
28		10101003		牙架座	Feed rockcr asm.	1
29		101S11016		牙架座螺钉SM3/16"×28 L=14	Screw SM3/16"×28 L=14	1
30		10128003		牙架座螺钉垫圈	Washer	1
31		10107001		牙架	Feed bar asm.	1
32		10126013		牙架销	Feed bar shaft	1
33		101S11025		螺钉SM11/64"×40 L=7	Screw SM11/64"×40 L=7	1
34		10114001		送料牙	Feed dog	1
		10114002		JK-608 (8750) /609送布牙	Feed dog	1
		10814001		JK-6090-0605送料牙	Feed dog	1
		10114004		JK-8900 (6-1) 送料牙	Feed dog	1
35		101S11018		螺钉SM1/8"×44 L=6	Screw SM1/8"×44 L=6	2
36		10115001		针板	Throat platc	1
		10115003		JK-608 (8750) /609针板	Throat platc	1
		10815001		JK-6090-0631针板	Throat platc	1
		10115005		JK-8900 (6-1) 针板	Throat platc	1

37		101S17002		螺钉SM11/64"×40 L=6.4	Screw SM11/64"×40 L=6.4	2
38		400672		牙架座组件	Feed bar asm.	1
39		10115002		推板	Slide plate	1
40		10127009		推板簧	Bed slide spring	1
41		101S11019		螺钉SM3/32"×56 L=2	Screw SM3/32"×56 L=2	2
42		10104003		抬牙叉形曲柄	Driving shaft crank asm.front	1
		10804003		JK-6090-0642抬牙叉形曲柄	Driving shaft crank asm.front	1
43		101S11020		螺钉SM11/64"×40 L=10.5	Screw SM11/64"×40 L=10.5	1
44		11202001		抬牙轴	Feed driving shaft	1
45		H03001		GB/T894.1-1986挡圈15	Retaining ring	1
46		10403015		抬牙轴前轴套	Feed rocker shaft bushing	1
47		10104004		抬牙后曲柄	Rear crank asm.	1
48		101S11016		螺钉SM3/16"×28 L=14	Screw SM3/16"×28 L=14	1
49		400093		抬牙连杆	Connecting rod	1
50		101S20005		抬牙连杆轴位螺钉SM9/32"×28 L=13.5	Hinge screw SM9/32"×28 L=13.5	1
51		101S16003		螺母SM9/32"×28 L=4	Nut SM9/32"×28 L=4	1
52		H03002		GB/T894.1-1986挡圈20	Snap ring	1
53		10108003		抬牙轴挡圈	Thrust collar asm.	1

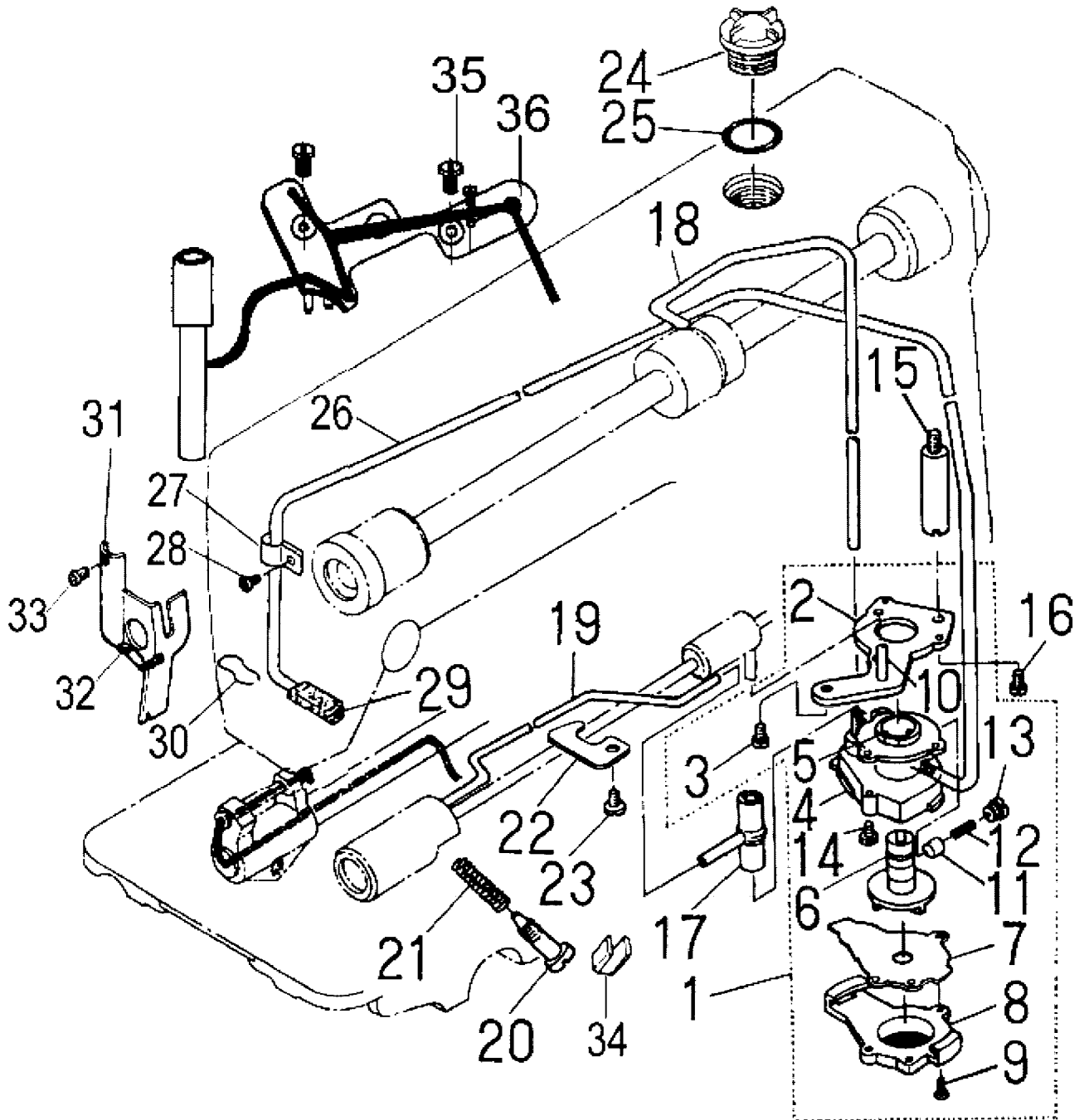
7. 送料调节分组件 Feed regulating components



7. 送料调节分组件/Feed regulating components

序号 NO.	备注 Note	零件编号 PartNo.	参考编号 Ref. PartNo.	零件名称 PartName	零件描述 Desc.	数量 Num.
1		10111021		送料距旋钮	Feed dial	1
		10111025		迅利 I / I B系列送料距旋钮	Feed dial	1
		12211001		JK-8755送料距旋钮	Feed dial	1
		10811001		JK-6090-0508送料距旋钮	Feed dial	1
2		101S11022		螺钉SM3/16"×28 L=18	Screw SM3/16"×28 L=18	1
3		10126014		送料调节螺柱	Feed regulator screw	1
		11426019		迅利 I / I B系列送料调节螺柱	Feed regulator screw	1
		10426006		JK-6090送料调节螺柱	Feed regulator screw	1
4		10122016		送料调节螺钉O形圈	Rubber ring	1
5		10126015		送料距锁合销	Pin	1
6		10127010		送料距锁合簧	Spring	1
7		10101004		送料调节器	Feed regulator	1
		11401015		迅利 I / I B系列送料调节器	Feed regulator	1
		10801001		JK-6090-0707送料调节器	Feed regulator	1
8		10403017		送料调节器轴套	Feed regulator bushing	1
9		101S11023		螺钉SM3/16"×28 L=6.5	Screw SM3/16"×28 L=6.5	1
10		10126016		倒送料连杆销	Feed regulator pin	1
		11426021		迅利 I / I B系列倒送料连杆销	Feed regulator pin	1
		10826001		JK-6090-0710倒送料连杆销	Feed regulator pin	1
11		101S11005		螺钉SM9/64"×40 L=6	Screw SM9/64"×40 L=6	2
12		10105005		倒送料连杆	Feed regulator connecting rod	1
		10105007		迅利 I / I B系列倒送料连杆	Feed regulator connecting rod	1
		12212003		JK-8755倒送料连杆	Feed regulator connecting rod	1
		10805001		JK-6090-0712倒送料连杆	Feed regulator connecting rod	1
13		H05003		GB/T896-1986挡圈5	Snap ring	2
14		10102010		倒送料轴	Feed reverse shaft	1
		10102023		迅利 I B系列倒送料轴	Feed reverse shaft	1
15		10122017		倒送料轴O形圈	Rubber ring	1
16		10103021		倒送料轴轴套	Feed lever metal	1
		10103024		迅利 I B系列倒送料轴轴套	Feed lever metal	1
17		300208		倒送料扳手	Reverse feed control lever	1
		302267		迅利 I B系列倒送料扳手	Reverse feed control lever	1
		301781		迅利 I 系列倒送料扳手	Reverse feed control lever	1
18		101S15013		螺钉SM15/64"×28 L=10	Screw SM15/64"×28 L=10	2
19		10404005		倒送料曲柄	Feed reverse arm asm	1
		1140402700		迅利 I / I B系列倒送料曲柄	Feed reverse arm asm	1
		1080400100		JK-6090倒送料曲柄部件	Feed reverse arm asm	1
20		101S17003		螺钉SM1/4"×40 L=20	Screw SM1/4"×40 L=20	1
21		10127011		倒送料拉簧	Feed reverse spring	1
		10827001		JK-6090-0722倒送料拉簧	Feed reverse spring	1
22		11412081		拉簧固定板	Feed spring hook	1
		10812001		JK-6090-0723拉簧固定板	Feed spring hook	1
23		11412070		摆动板座复位板	Adjusting link spring guide	1
24		101S11025		螺钉SM11/64"×40 L=7	Screw SM11/64"×40 L=7	2
25		10127012		摆动板座复位簧	Adjusting link spring	1
		10827002		JK-6090摆动座复位簧	Adjusting link spring	1

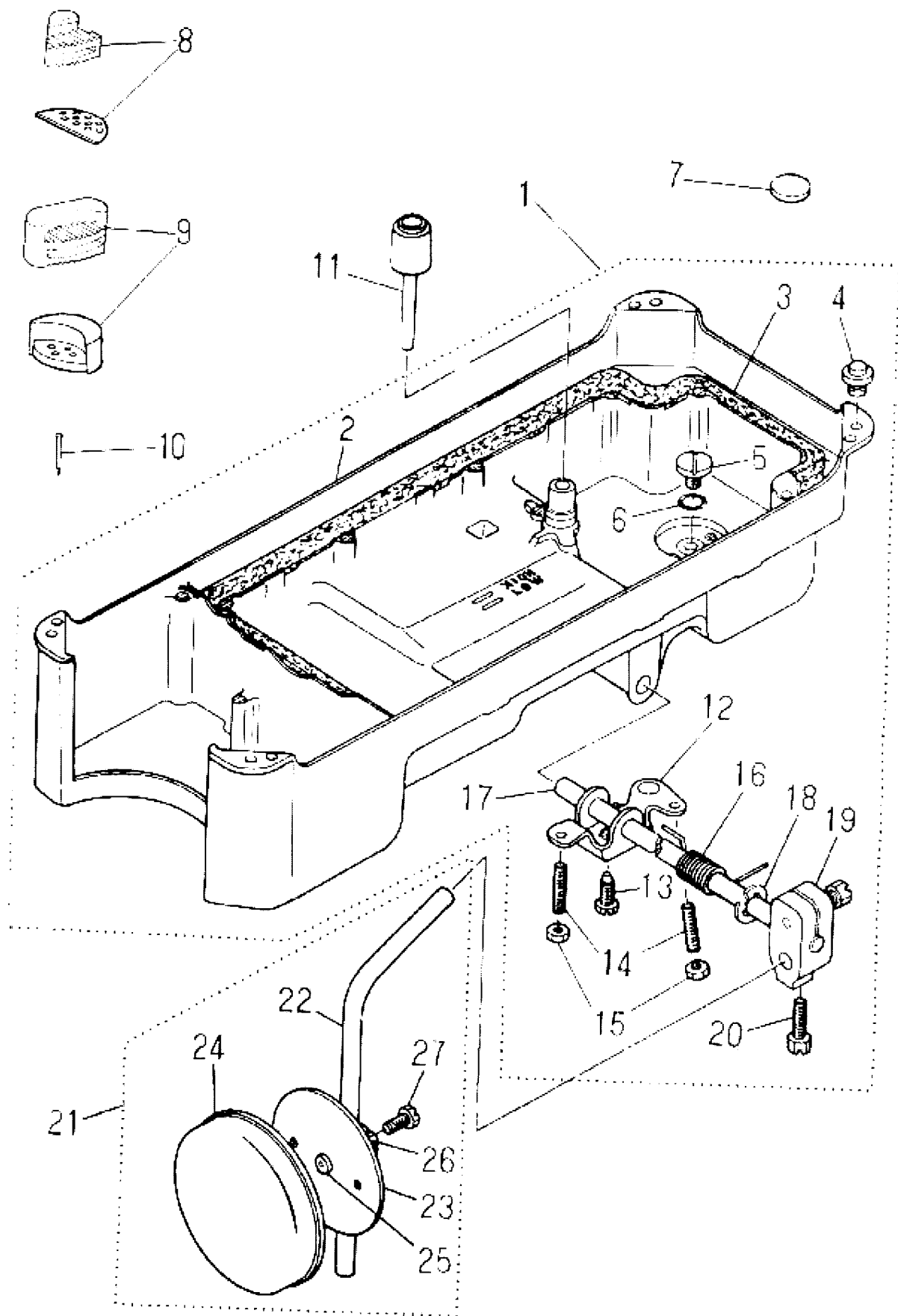
8. 润滑分组件 Lubrication components



8. 润滑分组件/Lubrication components

序号 NO.	备注 Note	零件编号 PartNo.	参考编号 Ref. PartNo.	零件名称 PartName	零件描述 Desc.	数量 Num.
1		1012000100		油泵分部件	Lubricating oil pump asm.	1
2		10112020		油泵安装板	Oil pump installing base	1
3		101S11026		螺钉SM15/64"×28 L=9	Screw SM15/64"×28 L=9	1
4		10120001		油泵体	Oil pump	1
5		10103022		油泵体衬套	Oil pump bushing	1
6		10111003		油泵叶轮	Oil pump impeller	1
7		10112021		油泵叶轮托板	Oil pump impeller cover	1
8		10111007		油泵盖	Lubricating oil pump cover	1
9		101S30006		螺钉	Screw	1
10		10121001		下轴供油管	Hook driving shaft oil tube	1
11		10122018		回油柱塞	Plunger	1
12		10127013		柱塞簧	Plunger spring	1
13		101S30007		柱塞螺钉	Screw	1
14		S04009		螺钉 M3×8	Screw M3×8	3
15		101S30008		油泵连接螺柱SM15/64"×28 L=9	Oil pump support SM15/64"×28 L=9	1
16		101S11011		螺钉SM11/64"×40 L=9.5	Screw SM11/64"×40 L=9.5	1
17		10136001		供油管接头	Rubber joint	1
18		11421007		上轴供油管	Main shaft oil tube	1
19		10121006		旋梭供油管	Oil tube	1
20		101S30009		螺钉SM15/64"×28 L=29	Oil adjusting screw SM15/64"×28 L=29	1
21		10127014		旋梭油量调节簧	Spring	1
22		10112022		旋梭供油管压板	Tube holder(lower)	1
23		101S11026		螺钉SM15/64"×28 L=9	Screw SM15/64"×28 L=9	1
24		10111004		油窗	Oil sight window	1
25		10122019		油窗O形圈	Rubber ring	1
26		10121007		回油管	Oil return tube	1
27		10112023		回油管夹	Oil return tube holder	1
28		101S11004		螺钉SM3/16"×28 L=7	Screw SM3/16"×28 L=7	1
29		10123006		回油毡	Oil felt	1
30		10127015		回油毡夹	Oil felt presser	1
31		10412007		面部防油板	Arm oil shield	1
32		10423005		防油板油线	Oil wick	1
33		101S11027		螺钉SM1/8"×44 L=3.4	Screw SM1/8"×44 L=3.4	1
34		10112053		油线夹	wick clip	1
35		101S11010		螺钉SM9/64"×40 L=11	Oil wick setplate screw SM9/64"×40 L=11	2
36		10112025		油线固定板	Oil wick setplate asm.	1

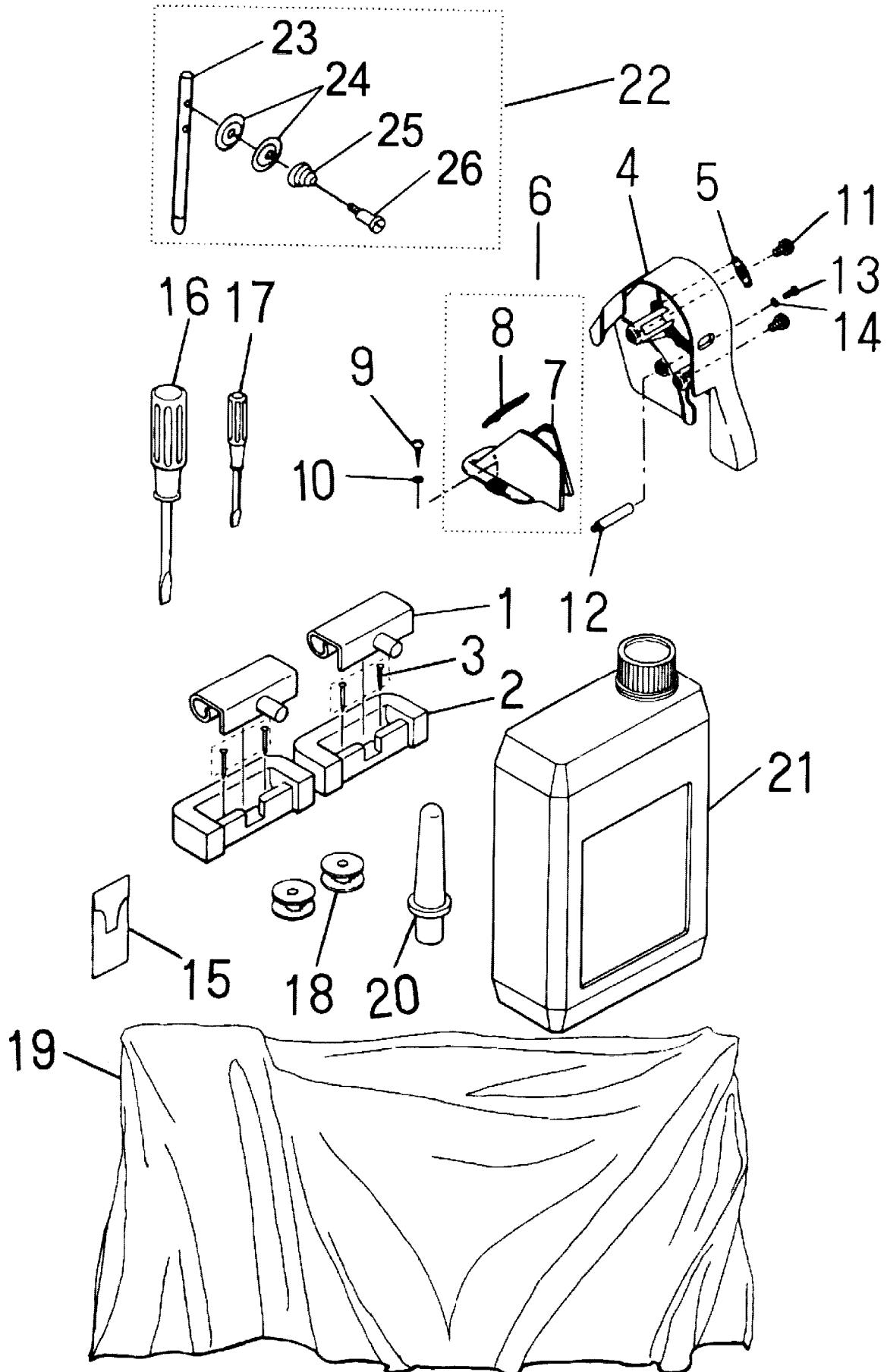
9. 油盘、膝抬压脚部分组件 Oil reservoir, knee lifter components



9. 油盘、膝抬压脚部分组件/Oil reservoir, knee lifter components

序号 NO.	备注 Note	零件编号 PartNo.	参考编号 Ref. PartNo.	零件名称 PartName	零件描述 Desc.	数量 Num.
1		1010100600		油盘部件	Oil reservoir asm.	1
2		10101006		油盘	Oil reservoir	1
3		10122020		油盘垫	Gasket	2
3		10122050		油盘垫(二)	Gasket	1
4		10122031		机头座垫	Rubber cushion	4
4		10122032		机头座垫(外销)	Rubber cushion	4
5		101S11028		螺钉SM5/16"×24 L=7	Screw SM5/16"×24 L=7	1
6		10122021		O形圈	Rubber ring	1
7		10131001		油盘磁铁	Oil reservoir magnet	1
8		10122022		油盘座垫(内销)	Oil reservoir felt cushion	2
8		10122032		油盘座垫(外销)	Oil reservoir felt cushion	2
9		10122023		油盘支架(内销)	Oil reservoir rubber	2
9		10122033		油盘支架(外销)	Oil reservoir rubber	2
10		101S30010		油盘座钉(外销)	Nail	4
11		10111005		抬压脚顶杆	Knee press lifter rod	1
12		10112027		抬压脚双向曲柄	Connecting rod, vertical	1
13		101S12002		螺钉M6 L=26	Screw M6 L=26	1
14		101S15012		螺钉M6 L=30	Screw M6 L=30	2
15		101S16004		双向曲柄限位调节螺母M6 L=4	Net M6 L=4	2
16		10127016		双向曲柄扭簧	Spring	1
17		10102011		抬压脚轴	Knee press rod	1
18		H05010		GB/T896-1986挡圈11	Snap ring	1
19		10101008		抬压脚操纵杆节头	Bearing bracket	1
20		101S12003		螺钉M8 L=16	Screw M8 L=16	1
21		1011202800		操纵杆组件	Knee press plate asm.	1
22		10112028		操纵杆	Knee lifter plate rod	1
23		10112029		操纵板	Knee press plate	1
24		10122024		操纵板软垫	Knee press plate cover	1
25		10122025		操纵杆垫	Rubber	1
26		10112030		操纵杆节头	Knee press plate holder	1
27		101S12004		螺钉M6 L=11	Screw M6 L=11	1

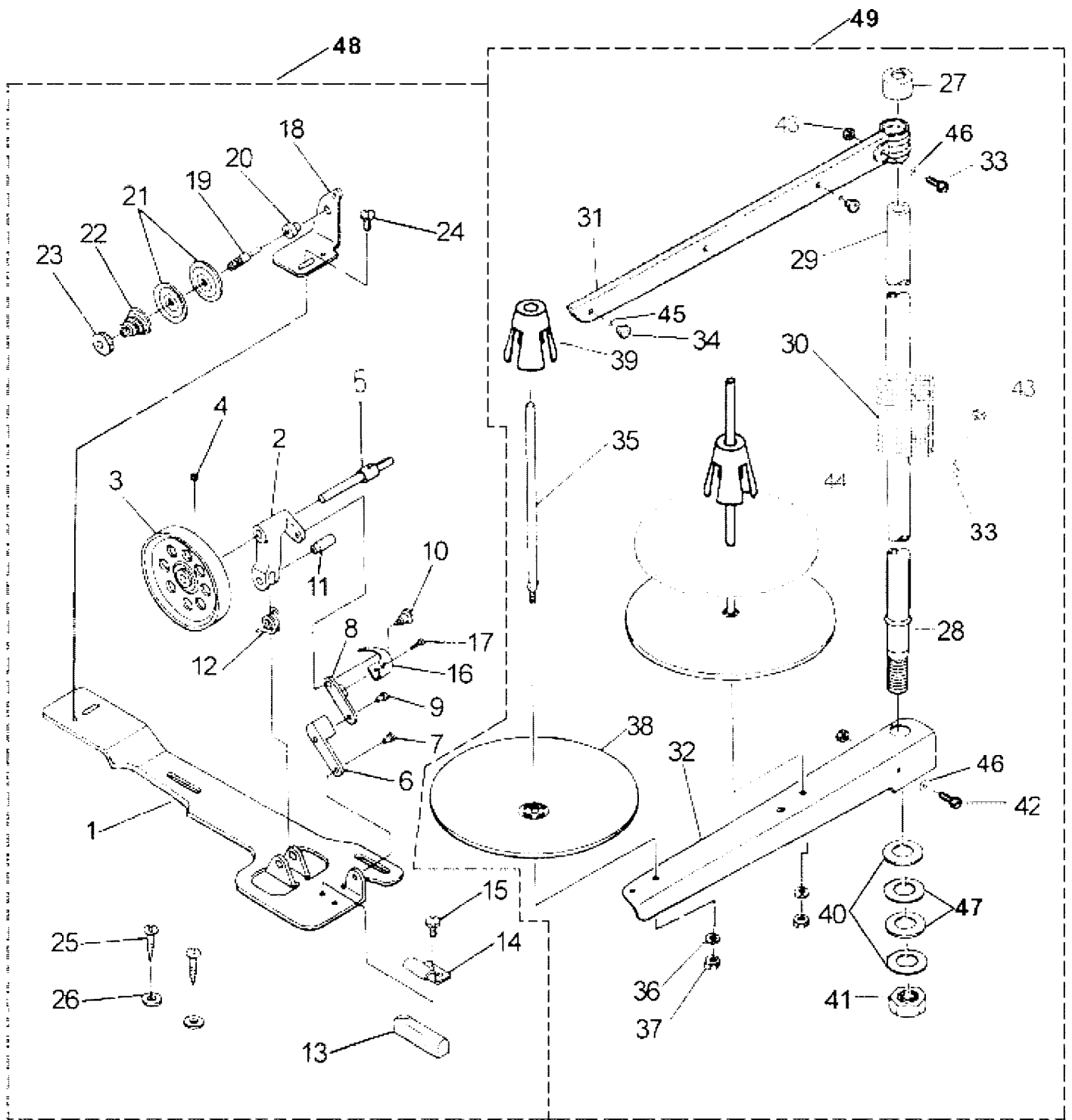
10. 机头附件 (1) Machine head accessories (1)



10. 机头附件(1)/Machine head accessories(1)

序号 NO.	备注 Note	零件编号 PartNo.	参考编号 Ref. PartNo.	零件名称 PartName	零件描述 Desc.	数量 Num.
1		1011203100		机头连接钩部件	Machine hinge plate asm.	2
2		10122026		机头连接钩座	Machine hinge plate	2
3		101S30010		机头连接钩座钉	Nail	4
4		10111006		上轮前罩壳	Beltcover,A	1
		300601		JK-608 (8750) /8755皮带罩上节(喷漆)	Beltcover,A	1
5		10111008		前罩壳安装架	Beltcover,A cap	1
6		1011100900		上轮后罩壳部件	Beltcover,B asm.	1
7		10111009		上轮后罩壳	Beltcover,B	1
		12211050		JK-608 (8750) /609皮带罩下节	Beltcover,B	1
8		1011101000		后罩壳盖部件	Beltcover,B cover asm.	1
9		101S30011		木螺钉	Wood screw	2
10		10128006		垫圈	Washer	2
11		101S11029		前罩壳紧固螺钉SM5/16"×24 L=16	Beltcover,A screw SM5/16"×24 L=16	2
12		101S30012		后罩壳支柱	Beltcover support	1
13		101S11030		螺钉SM3/16"×28 L=14	Screw SM3/16"×28 L=14	1
14		10128007		垫圈	Washer	1
15		10117001		机针	Needle	1
16		10131003		螺丝刀(中)	Screw driver,mendium	1
17		10131004		螺丝刀(小)	Screw driver,small	1
18		10118003		梭心	Bobbin	2
19		10131005		机头罩	Machine head cover	1
20		10111011		机头支柱	Machine rest pin	1
21		1011101200		油箱部件	Oil reservoir asm.	1
22		1011300700		过线器分部件	Needle thread guide pin asm.	1
23		10112008		过线柱	Needle thread guide pin	1
24		10112009		过线夹线板	Tension disc	2
25		10127004		过线夹线簧	Tension spring	1
26		101S30003		螺钉SM3/32"×56 L=10	Screw SM3/32"×56 L=10	1

10. 机头附件 (2) Machine head accessories (2)

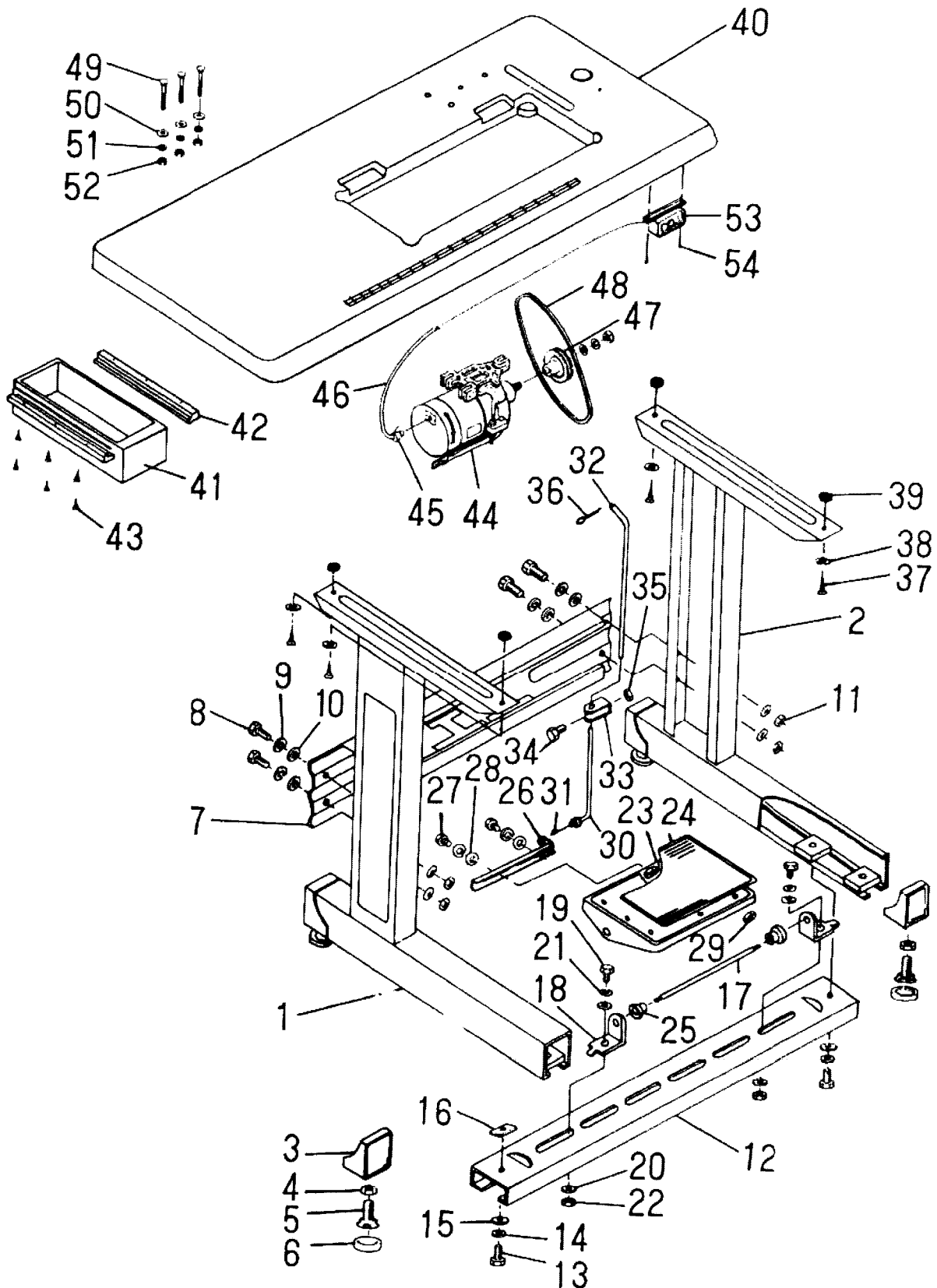


10. 机头附件(2)/Machine head accessories(2)

序号 NO.	备注 Note	零件编号 PartNo.	参考编号 Ref. PartNo.	零件名称 PartName	零件描述 Desc.	数量 Num.
1		10112056		绕线座	Bobbin winder base asm.	1
2		10101009		绕线架	Thread winder base asm.	1
3		10101010		绕线轮	Thread winder asm.	1
4		S04006		螺钉	Screw	1
5		10102012-1		绕线轴	Bobbin winder shaft	1
6		10112033		绕线座连杆	Connevting rod	1
7		10126018		绕线座连杆销	Connevting rod pin	1
8		10112034		绕线架连杆	Bobbin winder frame rod	1
9		10126018		绕线架连杆销	Bobbin winder frame rod pin	1
10		10120006		绕线架连杆轴位螺钉	Screw	1
11		10126019		绕线架销	Bobbin winder frame pin	1
12		10127017		绕线架簧	Bobbin winder frame spring	1
13		10122027		绕线轮制动垫	Rubber brake	1
14		10112035		制动垫夹	Presser plate	1
15		S04006		螺钉	Screw	1
16		10112036		满线跳板簧	Bobbin winder spring	1
17		S04017		过线夹螺钉	Hinge Screw	1
18		10112037		过线架座	Thread tension bracket asm.	1
19		101S30013		螺钉	Screw	1
20		10108005		过线夹线板挡圈	Bobbin winder tension disc collar	1
21		10112038		过线夹线板	Tension disc	2
22		10127018		过线夹线簧	Tension spring	1
23		101S16005		螺母	Nut	1
24		S04006		螺钉	Screw	1
25		101S30014		木螺钉	Wood screw	2
26		10128008		垫圈	Washer	2
27		20131019		线架杆顶防护橡皮	Spool rest rod rubber cap	1
28		20131002		线架杆下节	Spool rest rod (lower)	1
29		20131001		线架杆上节	Spool rest rod (upper)	1
30		20131003		线架杆接头	Spool rested joint	1
31		10112040		上线架过线杆	Thread guide asm.	1
32		10112057		下线架过线杆	Thread guide asm.	1
33		S04050		螺钉	Screw	3
34		10113010		过线圈(外)	Thread guide ring	2
35		20131006		线盘钉	Spool pin	2
36		W02027		弹簧垫圈	Spring washer	2
37		N01034		螺母	Nut	2
38		20131007		线盘	Spool rest	2
39		20131008		线团防松垫	Spool vibration stopper	2
40		W01048		垫圈	Washer	2
41		N02004		螺母	Nut	1
42		S04051		螺钉	Screw	1
43		N01034		螺母	Nut	4
44		20131010		线盘垫	Spool rest cushion	2
45		10113011		过线圈(内)	Thread guide ring	2
46		W01047		垫圈	Washer	2
47		10122106		橡胶垫圈	Washer	2
48		1013100600		绕线器组件	Bobbin winder unit	1
		1163101600		JK-608 (8750) /609绕线器组件	Bobbin winder unit	1
49		1013100700		线架组件	Thread Stand Components	1

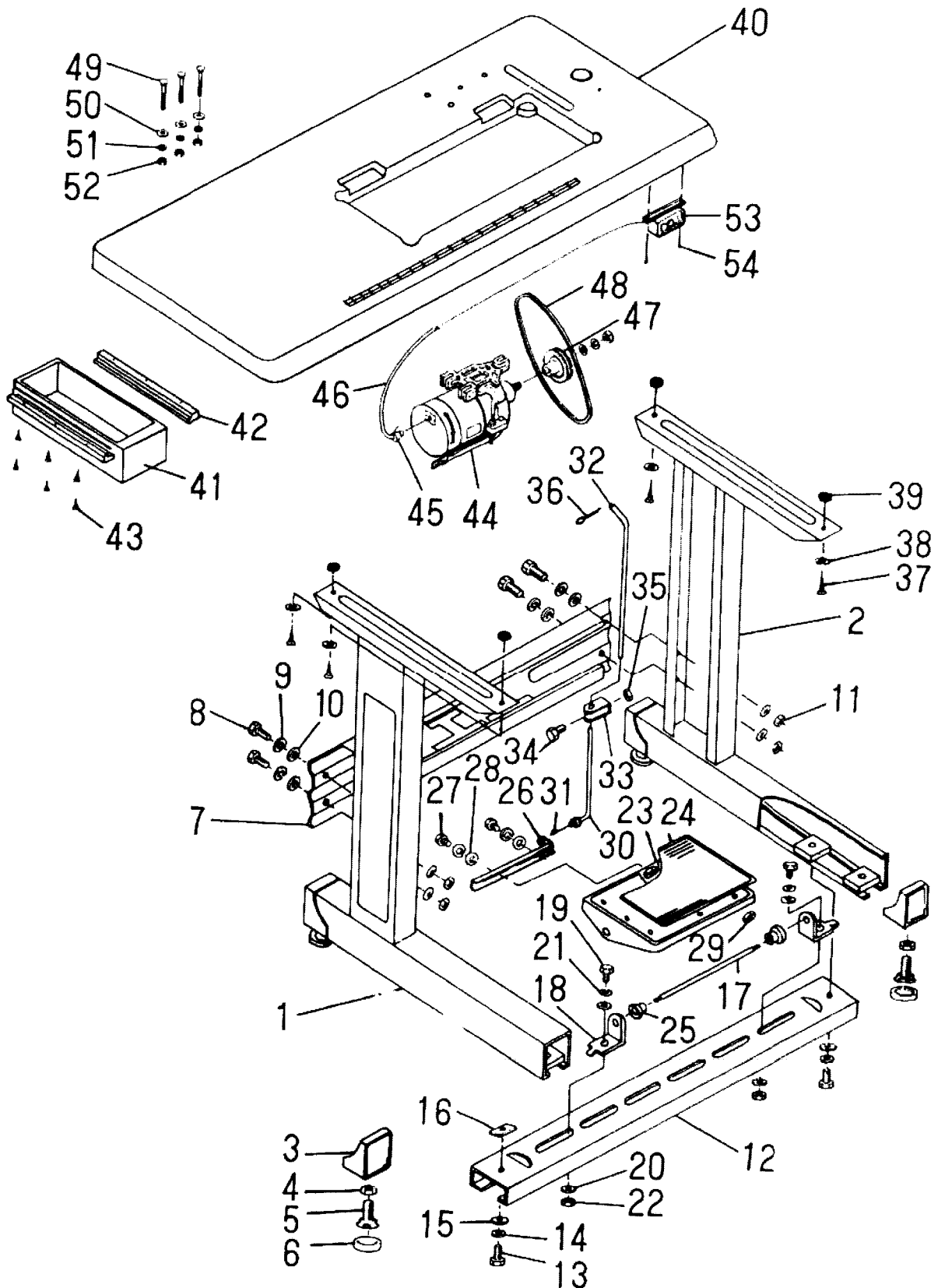
11. 机架、台板、电器分组件

Machine stand, table, electric appliance components



11. 机架、台板、电器分组件

Machine stand, table, electric appliance components

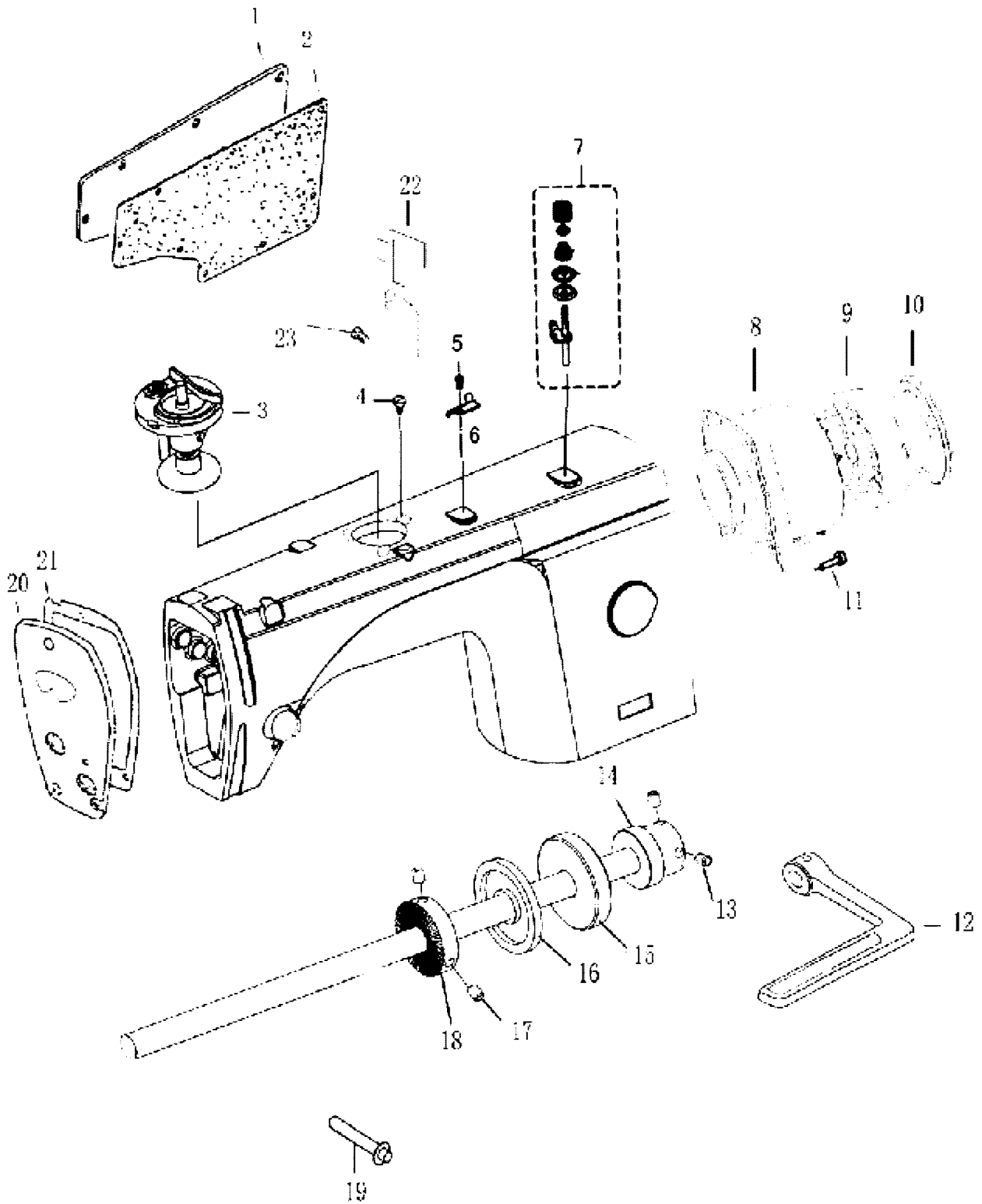


11. 机架、台板、电器分组件/Machine table electric components

序号	备注	零件编号	参考编号	零件名称	零件描述	数量
号	Note	PartNo.	Ref. PartNo.	PartName	Desc.	Num.
1		1011204200		边架部件(左)	Stand side asm.left	1
2		1011204300		边架部件(右)	Stand side asm.right	1
3		10111015		边架座套	Rubber cushion	4
4		N01010		螺母	Nut	4
5		101S30015		调节座	Screw	4
6		10122029		调节座橡胶	Space ring	4
7		10112044		横档	Stand side support	1
8		L02014		横档连接螺栓	Screw	4
9		10128011		垫圈	Spring washer	4
10		W01010		垫圈	Washer	8
11		N01011		螺母	Nut	4
12		10112045		踏板轴档	Treadle brace	1
13		L02014		踏板轴档螺栓	Screw	2
14		10128011		垫圈	Spring washer	2
15		W01010		垫圈	Washer	2
16		10112046		踏板轴档定位螺母板	Treadle brace locknut plate	2
17		10102013		踏板轴	Treadle shaft	1
18		10112047		踏板轴座	Treadle bravket	2
19		L02014		踏板轴座螺栓	Screw	2
20		W01010		垫圈	Washer	4
21		10128011		弹簧垫圈	Spring washer	2
22		N01011		螺母	Nut	2
23		10112048		踏板	Trcable	1
24		10122030		踏板垫	Gas Ket	1
25		10103023		踏板衬套	Collar	2
26		10112049		踏板杠杆	Tteadle pitman	1
27		L02015		踏板杠杆螺栓	Screw	2
28		W01003		垫圈	Washer	4
29		N01012		螺母	Nut	2
30		10112050		下拉杆	Pitman rod,lower	1
31		10127019		拉杆弹簧	Spring	1
32		10112051		上拉杆	pitman rod,upper	1
33		10112052		拉杆接头	Joint	1
34		L02015		拉杆接头螺栓	Joint screw	1
35		N01012		螺母	Nut	1
36		10129001		上拉杆开口销	Pitman rod split pin (upper)	1
37		101S30016		台板木螺钉	Table Wood screw	4
38		10128012		垫圈	Table Wood screw washer	4
39		10128013		台板垫圈	Table washer	4
40		10132002		台板	Table	1
41		10111016		抽斗	Drawer	1
42		10111017		抽斗导轨	Drawer rail	2
43		101S30017		抽斗导轨木螺钉	Drawer rail wood screw	6
44		10133001		GFC4024型电机	Motor GFC4024 motor	1
45		10130002		电机接线插头	Motor connecting wire plug	1
46		10130003		电机接线	Motor wire	1
47		10135004		电动机带轮	Motor pulley	1
48		10135002		机头传动带	Machine driving beit	1
49		101S30018		螺钉	Screw	3

50		10128014		垫圈	Washer	3
51		10128011		弹簧垫圈	Spring washer	3
52		N01011		螺母	Nut	3
53		10130004		电源开关	Power source switch	1
54		101S30019		电源开关木螺钉	Power source switch wood screw	1

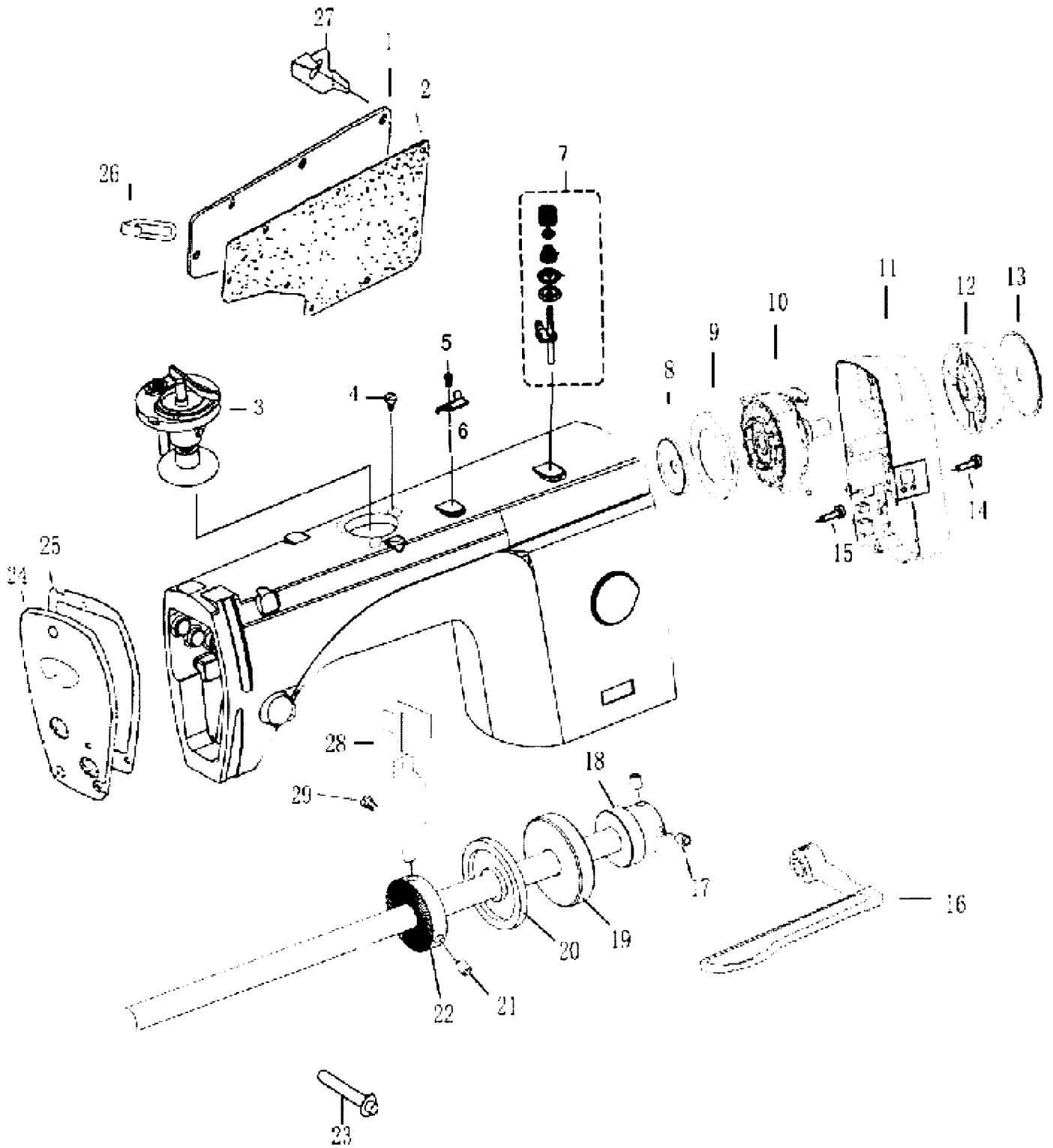
迅利 | 专用部件 / For SHIRLEY | Material



12. 迅利 I 专用部件/For SHIRLEY I Material

序号	备注	零件编号	参考编号	零件名称	零件描述	数量
		号	Ref. PartNo	PartName	Desc.	
1		301512		后窗板	Side plate	1
2		10122104		后窗板垫	Gasket	1
3		1143103800	236-36061	绕线器组件	Bobbin winder unit	1
4		114S11003		螺钉	Screw	3
5		101S11005	SS-6090620-TP	螺钉	Screw	2
6		11419001	105-02300	割线刀	Knife	1
7		1141300200	236-36657	底线夹线器	Thread tension asm.	1
8		1013300100		电机	Motor	1
9		10135008		手轮	Hang wheel	1
10		10111062		防尘盖	cover plate	1
11		114S13001	SL-6052592-TN	螺栓	Bolt	4
12		301781		倒送料扳手	Reverse feed control lever	1
13		S10037		螺钉	Screw	4
14		10103073		上轴后轴承套	main shaft sleeve	1
15		B07042		轴承	Bearing	1
16		11422028		油封组件	Oil seal unit	1
17		114S14001	SS-8110422-TP	驱动轮螺钉	Driving wheel screw	2
18		11435013		绕线器驱动轮	Bobbin winder driving wheel	1
19		11426020		松线辅钉	Tension release supporting	1
20		11401052		面板	Face plate asm.	1
21		11422059		面板垫	Face plate gasket	1
22		11415002		隔油板	oil separation tank	1
23		101S11033		油管压板螺钉	oil tube plate screw	1

迅利TB专用部件 / For SHIRLEY TB Material



13. 迅利 IB 专用部件/For SHIRLEY IB Material

序号	备注	零件编号	参考编号	零件名称	零件描述	数量
		号	Ref. PartNo	PartName	Desc.	
1		301512		后窗板	Side plate	1
2		10122104		后窗板垫	Gasket	1
3		1143103800	236-36061	绕线器组件	Bobbin winder unit	1
4		114S11003		螺钉	Screw	3
5		114S11015		螺钉	Screw	2
6		11419001	105-02300	割线刀	Knife	1
7		1141300600		底线夹线器	Thread tension asm.	1
8		10122105		上轴后套挡油油封	Main shaft sleeve Oil seal unit	1
9		10111031		绝缘罩	Insulation cover	1
10		10111061		电机	Motor	1
11		1013300300		罩壳	cover	1
12		10135008		上轮	Hang wheel	1
13		10111062		防尘盖	cover plate	1
14		114S30001		内六角圆柱头螺栓	socket bolt	4
15		114S30018		螺栓 (内六角)	socket bolt	4
16		302267		倒送料扳手	Reverse feed control lever	1
17		S10037		螺钉	Screw	4
18		10103073		上轴后轴承套	main shaft sleeve	1
19		B07042		轴承	Bearing	1
20		11422028		油封组件	Oil seal unit	1
21		114S14001	SS-8110422-TP	驱动轮螺钉	Driving wheel screw	2
22		11435013		绕线器驱动轮	Bobbin winder driving wheel	1
23		11426020		松线辅钉	Tension release supporting	1
24		11401052		面板	Face plate asm.	1
25		11422059		面板垫	Face plate gasket	1
26		10113004	229-20508	右线钩	Arm thread guide A	1
27		11212043		电线压板	Cord hold	1
28		11415002		隔油板	oil separation tank	1
29		101S11033		油管压板螺钉	oil tube plate screw	1